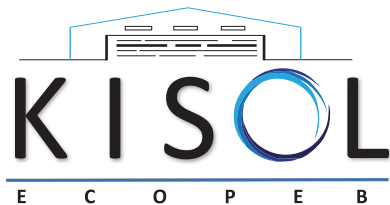


www.kisolecopeb.com

OVER 10+ YEARS **EXPERIENCE**



WE'RE PROFESSIONAL
INDUSTRIAL



"Creating Landmarks"

**PEB
WAREHOUSE
FACTORIES
MULTIFLOOR PEB
C&Z PURLINS
EXTERIORS**



About Us

Kisol Eco PEB is a Brand of Kisol Energies, Ranchi, Jharkhand. We were a renowned company involved in sheet Rolling industry based in Delhi. We have more than a decade long experience in iron rolling and fabrication. Our Rolled products were widely used in PEB Industry and other industries. With our Guide and mentor Mr. Ravi Shankar who is an engineer by profession and have very good architectural and structural design experience of more than 15yrs. We are also the only C&Z Rolling company based in Jharkhand/ Bihar. We are also only PEB manufacturer in Jharkhand & among few manufacturers based in Eastern India, We have a complete Inhouse manufacturing facility for any type of PEB structures centrally located at Ranchi, Jharkhand to deliver best PEB building in eastern India with quality & service at par with metros. We have a team of expert and experienced designers to make your building sturdy & aesthetically good. Our team tests building virtually for all type of loads like Wind, earthquake, self-load & foundation as per the soil. We are a dedicated team to excel and supply to complete the customer requirements in record time with record price & best service. We have a clear & transparent motto to serve our customer best.



What's Special we offer:

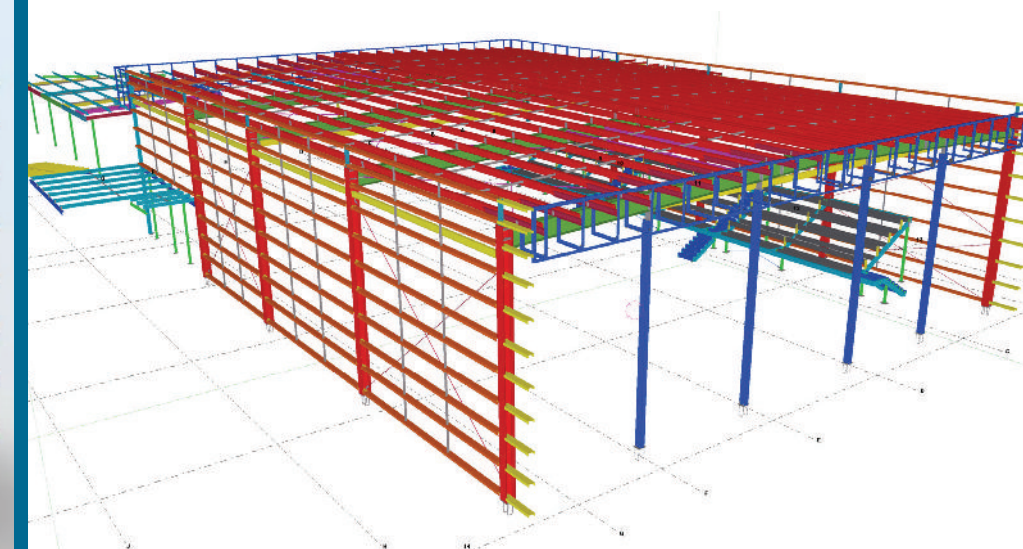
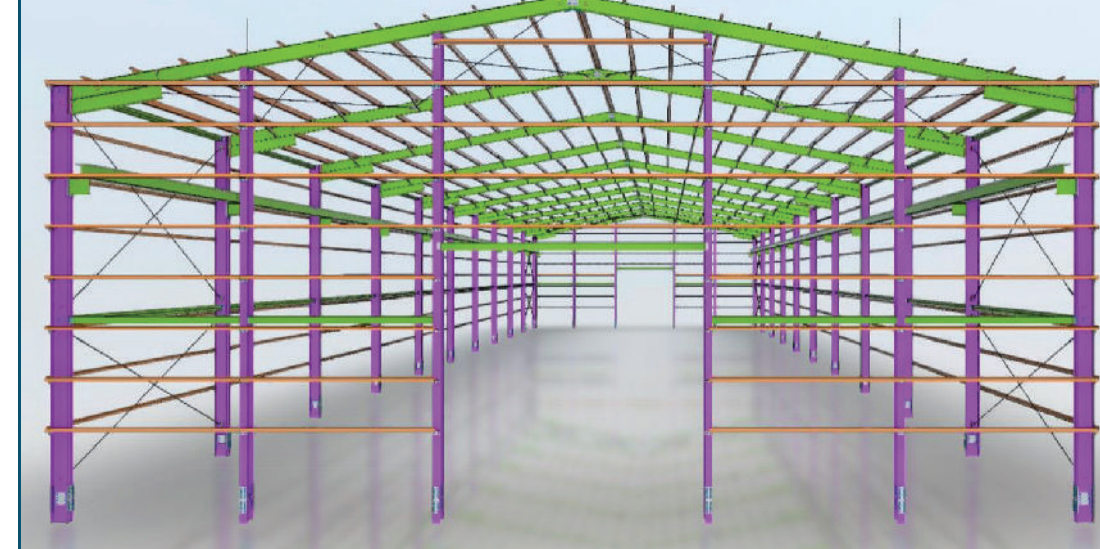
- **PROFESSIONALISM:** A company with sound principles, Vision, Mission & dedication towards excellence.
- **EXPERIENCE:** Delivered various projects across nation
- **SINGLE POINT OF CONTACT:** We support our customers with Architect Assistance, Structural Design, Vaastu Consultancy, Revenue records, Legal Advice, 2D and 3D drawings, the license from agencies like BBMP/BESCOM/BWSSB etc.
- **RESPONSIBILITY TO EXECUTE & DELIVER:** The contract is executed by technically well experienced and qualified staff. A Supervisor will be available for a minimum of 4 hours per day on the site and Daily Supervision by the chief contractor.
- **ECONOMICAL:** Once the quote is extended, there will be no extra expenses. We stick to the quote. The charges are only for construction and our package includes both Structural and Architectural planning.
- **FLEXIBLE:** We never create a situation that the clients need to buy the materials from the vendors listed with us. We are flexible, with the client's choices.
- **LOCAL PRESENCE:** with our factory present centrally In Ranchi we are always available for best service around you.
- **START TO FINISH SOLUTION:** We also provide solution along with land from start to finish service i.e. from buying land to constructing Warehouse and leasing it at right market price
- **LEASING:** we have partners in market which are connected with a good network of clients and services which help our customers in getting right customers at right price in warehouse/factory leasing with all round legal support during period of lease.

OUR PROCESS



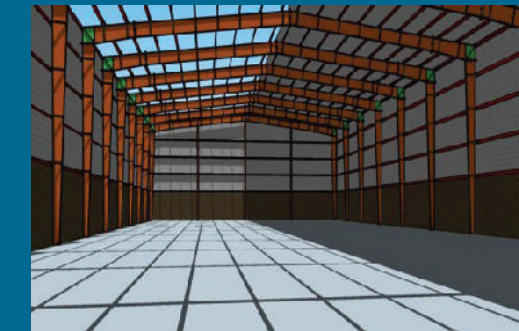
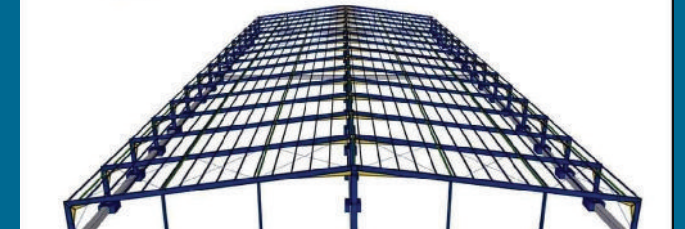
Fabrication & Infrastructure

We have a state of art facility for PEB manufacturing centrally located at Ranchi, Jharkhand. We have all modern tools and machinery which is needed to work at its best. Our company is the only C&Z Rolling company based in Jharkhand/ Bihar. We are also only PEB manufacturer (not trader) in Ranchi, Jharkhand & among few manufacturers based in Eastern India. Our company have complete inhouse machinery to manufacture best PEB structures at our factory at Ranchi, Jharkhand. Unlike Local contactors who manufacture conventional Trusses on site with small tools & install it on Jugaad and compromises quality & long life of structure, our expert team manufactures Prefabricated structures at our factory in Ranchi with adequate & precise tools & machine & erect it on site to give best quality to the product & your building. We have state of art C Z Rolling, CNC plasma Cutting, SAW welding, MIG, Anchor Bolt Machine & other tools & tackles to manufacture best quality product. Our Expert fabrication team help you in making your investment to come true to itself in the form of best PEB building with great strength and aesthetically sound. We have a monthly capacity of 250 tons of Purlins & 100 tons of Built-up structures.



Design

With our Expertise in design for more than 10 years. We had created marvellous in the field of design & Engineering. We design to keep your structure safe & sturdy for years and years of service. Our inhouse design team and our design consultants together make sure to make a best suitable design as per the customer needs. Our design are first tested in our consultant virtual lab to face all type of environmental & natural calamities and stay strong in any type of situation. Our design includes all type of civil, structural, electrical, drainage & plumbing or any other type of requirements as per our customer need. We ensure to utilise maximum of the space with optimum output and utilisation to provide maximum profits.





Pre Engineered Buildings

Pre Engineered Buildings (PEB) revolutionized the construction market using built-ups in place of conventional Hot Rolled Sections. PEB is a METLEX structure built over a structural concept of primary members, secondary members, and the cover sheeting connected to each other. Pre Engineered Buildings can be fitted with different structural additions like trusses, mezzanine floors, fascia's, canopies and crane systems as per user requirements.

We are offering our clients with the design, fabrication and erection of pre-engineered buildings that is catering to the demands of the

construction sector. Our services for pre-engineered buildings are catered in accordance with the exact requirements of our clients and are highly acknowledged for its following advantages:

- 30-50% saving in total project schedule time due to fast delivery and quick site erection
- Reduction in project cost due to earlier realization of revenue to owner
- Large clear spans
- Flexibility in expansion in future (in terms of length, width and height)
- Assurance of ISO 9001 quality standards
- Low Maintenance of structures
- Roof and wall insulation of structures to reduce energy costs and improve comfort level inside the building
- Architectural versatility
- Earth quake resistance.



Prefabricated hospital/ Commercial Buildings

We Offer our best Services for Pre Engineered Mezzanine Steel Structure/Mezzanine Buildings. We delivered our best suited manufacturing technology for Mezzanine construction and well qualified Engineers for QA/QC of the Building materials. Pre-Engineered Mezzanine Buildings are more widely used in everywhere, We made this Easy to build, Easy to Construct, Easy to install, & economic for the buyers. The PEB Mezzanine Buildings made from raw material HR & CR steel plates as per customers' requirements and this all parts of the PEB shed is designed and Pre-fab in workshop with quality of work. The whole parts are dispatch to site for the final Erection of Mezzanine Buildings.

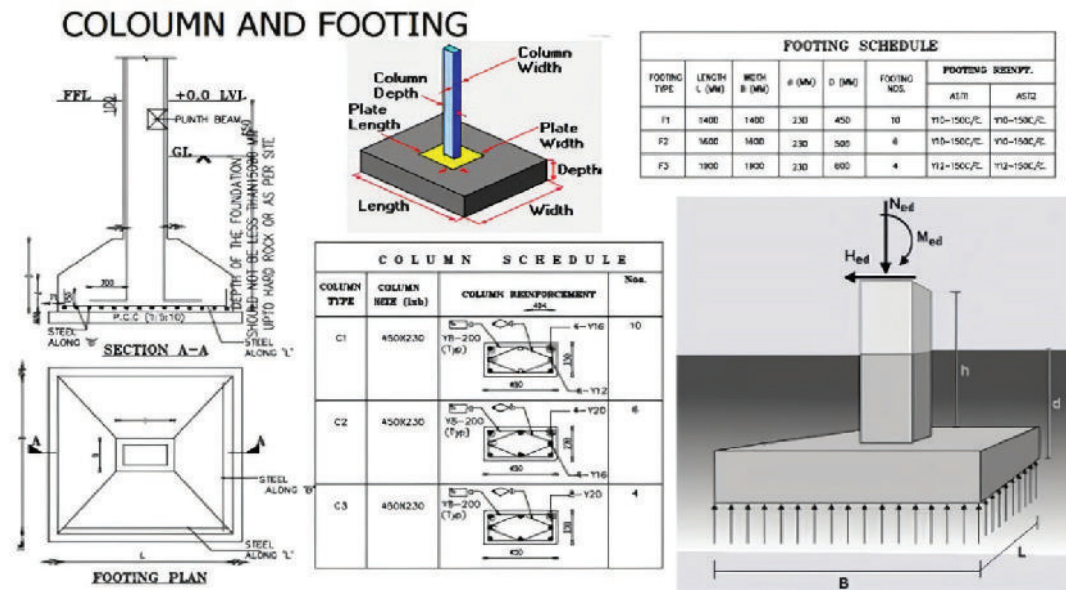
The Multi-Story-Pre-Engineered Building (MSPEB) is designed as like good looking building and stronger, stable, at any geometric, geological condition of that place. This type of buildings are most widely used in our commercial Building purpose like Hospitals, Shopping Complex, Schools, Hotel Etc. these buildings are different from conventional RCC buildings and also these can be construct to fast with cost & Time saving process. Another different factor of making this type of Multi-Floor PEB Buildings are insufficient space of working, by using the PEB multi-Floor Building we can multiply the same space more and more as per our requirement.



SILENT FEATURES

- These are designed as per the geographical conditions so it can be made earthquake, typhoons, cyclones and other natural condition proof
- Interiors can be done as per the conventional buildings
- Height of the building can go from 4-24mts or even more if designed accordingly
- Easily Assembled and transported to site directly from factory
- Costs below 50% of the conventional buildings
- Can be made sound proof and other features can be added as per requirements
- Can be designed for heavy loads and multi-floor factory operations also or place with higher footfalls

SAMPLE DRAWING &
FORCE SIMULATION OF
OUR CIVIL WORK



Civil work

Civil is the most ignored part in the PEB most warehouse developer give it in the scope of Owner which again assign them to local contactors which is a biggest blunder of the whole cost and manufacturing of Warehouse. Civil is the most important part as the complete system is dependent on it and future wear and tear is much responsible for that. Civil work is not just only pouring cement and mortar or binding TMT of above thickness than required or under thickness used to save money. Proper thickness of TMT, proper ratio of aggregate, sand and cement, proper grading of Mortar and proper curing is required to make it happen. Our team of engineers ensure that your civil work is done properly and in best manner. We prefer ready-mix RMC so that we can maintain the quality and evenness of civil work. We test the civil mortar by Cube test to ensure that the mortar poured are as per the grading of material required. Our team of Civil engineers ensures proper depth filling and curing of the civil work. Same we ensures for the flooring of the warehouse as local contactors give absurd suggestions to save money but our team ensures that it should be laid in best way as per the weight bearing capacity required for our clients and future utilization of warehouse.



Prefabricated Façade/Exteriors/ baffle

Looking for the best Architectural Facade and Ceiling solutions provider for your building, industrial set up, commercial building or infrastructure premises, we at Kisol Eco PEB is always there to help you. Kisol Eco PEB understand the need of our customers and provide them complete turnkey solution from inception to completion with the help of experienced engineers, technical team & highly skilled erectors. We have wide range of products for exterior, interior & ceilings applications. Facade cladding is extremely important both for functional and for aesthetical reasons. Vertical external cladding is a filter, a physical bordering, it's a way the building mingles with the environment and it influences the perception we get from the building. Depending on the geographic area, the use, the climate, the design and the budget you can choose from several types of façade cladding. Metal panels, holed and ashlarred sheets and metal mesh to make complete facades. And then, natural and reconstituted stone finishes, wooden sheets and laminated transparent or opaque plastic layers for bright and colorful facades.



Cold Rooms/ Puff Panels/ Insulated wall panels



Kisol Ecopeb is a leading Manufacturer of PUF (Polyurethane Foam) Panels in Eastern India. We are dedicated to delivering high-quality and innovative products that cater to a wide range of applications. That can be used for a variety of applications, such as roofing, wall cladding, cold storage, clean rooms, Insulation for industrial and commercial buildings, Partitioning walls for offices and buildings, Sound insulation for studios & theatres, Portable cabins and prefabricated structures, Refrigerated trucks and containers and more.

As a reliable name in the prefab industry, we have earned a reputation for years of experience and commitment to excellence.

THE PERFECT MATERIAL FOR MULTIPLE APPLICATIONS

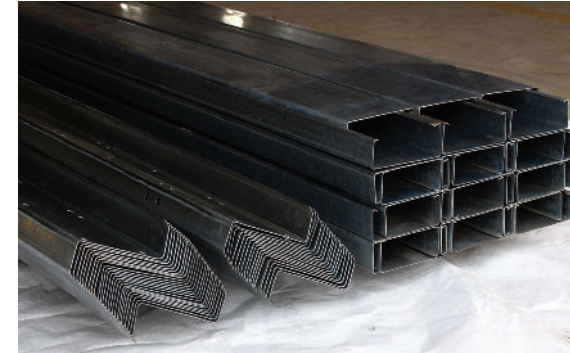
Thermal efficiency, material sturdiness as well as fire resistance are characteristic features of sandwich PUF panels made at EPACK Prefab. A wide array of applications across numerous commercial as well as commercial platforms has equipped organizations to lead their corresponding industries.

THE FLEXIBILITY OF POLYURETHANE INSULATION PANELS HAS BEEN THE MAIN REASON BEHIND IT'S WIDE ADOPTION IN:

- Food processing industry
- Cold storages/ Clean Rooms
- Telecom Shelters
- Fruit & vegetable storage
- Milk & dairy industry
- Floriculture industry
- Prefab buildings
- Warehouses
- Ripening chambers
- Seafood industry
- Meat & poultry industry
- Pharmaceutical storage

www.kisolecopeb.com

C&Z purlin



We Kisol Eco PEB is only manufacturer of C&Z purlin situated at Ranchi, Jharkhand. We have a long range of sizes we can manufacture at our factory ranging from 60mm to 300mm. we have a large variety of Materials available suitable as per need in PEB, Solar & raking industry like HR E250, E350, GP 120GSm, Galvalume, Posmac 310 etc. Our machine is capable of making C, Z, U, Sigma sections. We have a monthly capacity of around 250 tons of fabricated purlins.



Actual
Site
images



www.kisolecopeb.com



A UNIT OF KISOL ENERGIES, RANCHI, JHARKHAND

PLOT NO 116,117,118 VILL-SILWAI,
THANA 174, DIST. – NAMKUM, RANCHI-835103, JHARKHAND



Contact us

WEBSITE

WWW.KISOLECOPEB.COM

WRITE TO US

KISOLECOPEB@GMAIL.COM

GET IN TOUCH

+91 9955591233